

# **EDGESINKS™**

Seamless Integration

## **The ULTIMATE in Seamless Integration**

Because seeing is believing™



The ONLY stainless steel sinks which can be  
SEAMLESSLY integrated into ALL surfaces...



- + Laminate
- + Compact
- + Solid Surface
- + Quartz
- + Ceramic
- + Marble
- + Stone
- + Hardwood

EDGESINKS™ in Quartz





EDGESINKS™ in Solid Surface

## About Us

With over 30 years' experience in the global kitchen & sink industry, we are proud to bring the EdgeSinks™ concept to Europe – the most dramatic & influential innovation to enter our industry, changing forever the relationship with the sink & work surface.

Together with our partners Karran USA, we have developed a range of luxury handmade sinks for the European furniture & commercial market. Our EdgeSinks™ are unrivalled in the market place.

EdgeSinks™ are tried & tested and have been the industry choice for nearly seven years in North America. Now, together with our distribution partners Europe-wide, we bring the Edge Sink to you. Our distribution channels include Ireland, UK, Germany, Italy, Netherlands, Belgium, France and Israel, all stocking the complete range of EdgeSinks™ & Accessories.

### Value added & self-sale

Retail & marketing have described EdgeSinks™ as a "Value added & self-sale" product; consumers instantly recognise that the Edge system eliminates all the issues associated with traditional methods, an innovation to arouse the consumer and close that sale!



EDGESINKS™ in Fenix NTM®

# Kitchen Range

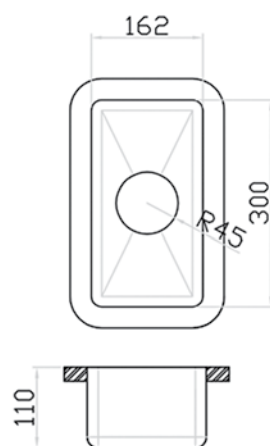
## PRFE 100



### Features & Specification

- + Bowl size 300 x 162 x 110
- + 15mm radius corners
- + 1.2mm, 304 stainless steel
- + Steel surface, brushed satin finish
- + Functional drain groves
- + 25mm machined resin matrix rim
- + Under mount installation only
- + 90mm waste opening
- + Waste sets not included with sink
- + Supplied without adhesive or template
- + Waste set: COM028

ART NO. 110.100/101



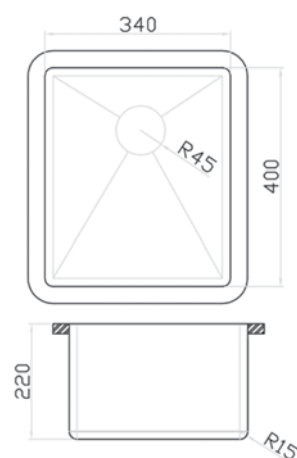
## PRFE 200



### Features & Specification

- + Bowl size 340 x 400 x 220
- + 15mm radius corners
- + Overflow aperture
- + 1.2mm, 304 stainless steel
- + Steel surface, brushed satin finish
- + Sound damping pads
- + Functional drain groves
- + 25mm machined resin matrix rim
- + Under mount installation only
- + 90mm waste opening
- + Waste & overflow sets not included with sink
- + Supplied without adhesive or template
- + Waste & Overflow set: COM024 | COM018

ART NO. 211.100/101



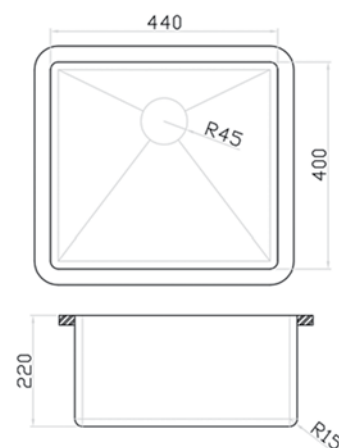
## PRFE 280



### Features & Specification

- + Bowl size 440 x 400 x 220
- + 15mm radius corners
- + Overflow aperture
- + 1.2mm, 304 stainless steel
- + Steel surface, brushed satin finish
- + Sound damping pads
- + Functional drain groves
- + 25mm machined resin matrix rim
- + Under mount installation only
- + 90mm waste opening
- + Waste & overflow sets not included with sink
- + Supplied without adhesive or template
- + Waste & Overflow set: COM024 | COM018

ART NO. 211.700/701



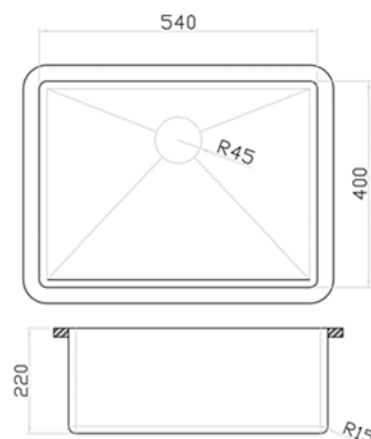
## PRFE 300



### Features & Specification

- + Bowl size 540 x 400 x 220
- + 15mm radius corners
- + Overflow aperture
- + 1.2mm, 304 stainless steel
- + Steel surface, brushed satin finish
- + Sound damping pads
- + Functional drain groves
- + 25mm machined resin matrix rim
- + Under mount installation only
- + 90mm waste opening
- + Waste & overflow sets not included with sink
- + Supplied without adhesive or template
- + Waste & Overflow set: COM024 | COM018

ART NO. 311.100/101



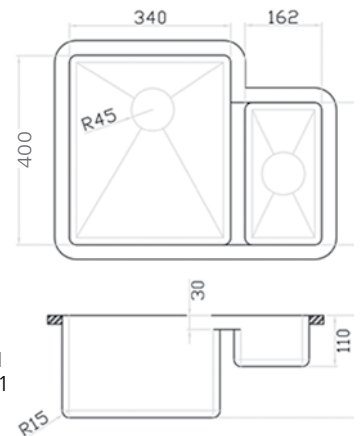
## PRFE 350L



### Features & Specification

- + 1 + 1/2 bowl kitchen sink
- + Bowl size 340 x 400 x 220 & 300 x 162 x 110
- + 15mm radius corners
- + 1.2mm, 304 stainless steel
- + Overflow aperture
- + Steel surface, brushed satin finish
- + Under mount installation only
- + 25mm machined resin matrix rim

- + Functional drain groves
  - + Sound damping pads
  - + 90mm waste opening
  - + Waste & overflow sets not included with sink
  - + Supplied without adhesive or template
  - + Waste & Overflow set: COM025 | COM019
- PRFE 350L ART NO. 321.100/001  
PRFE 350R ART NO. 321.200/201



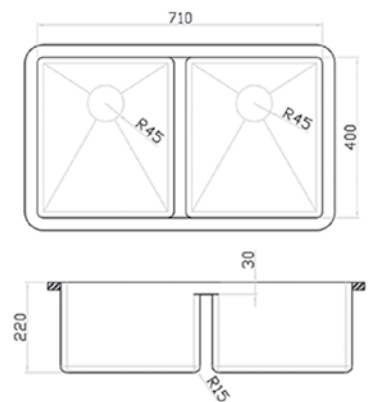
## PRFE 400



### Features & Specification

- + Bowl size 710 x 400 x 220
- + 15mm radius corners
- + Overflow aperture
- + 1.2mm, 304 stainless steel
- + Steel surface, brushed satin finish
- + Sound damping pads
- + Functional drain groves
- + 25mm machined resin matrix rim
- + Under mount installation only

- + 90mm waste opening
  - + Waste & overflow sets not included with sink
  - + Supplied without adhesive or template
  - + Waste & Overflow set: COM025 | COM019
- ART NO. 421.100/101



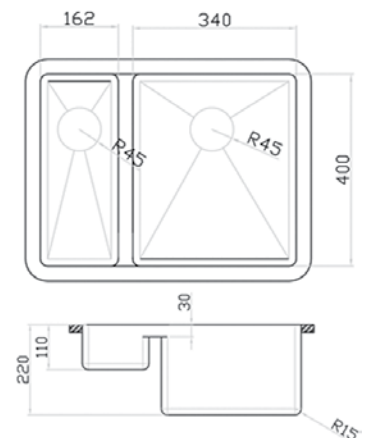
## PRFE 500



### Features & Specification

- + 1 + 1/2 bowl kitchen sink
- + Bowl size 340 x 400 x 220 & 400 x 162 x 110
- + 15mm radius corners
- + 1.2mm, 304 stainless steel
- + Overflow aperture
- + Steel surface, brushed satin finish
- + Under mount installation only
- + 25mm machined resin matrix rim

- + Functional drain groves
  - + Sound damping pads
  - + 90mm waste opening
  - + Waste & overflow sets not included with sink
  - + Supplied without adhesive or template
  - + Waste & Overflow set: COM025 | COM019
- ART NO. 521.100/101



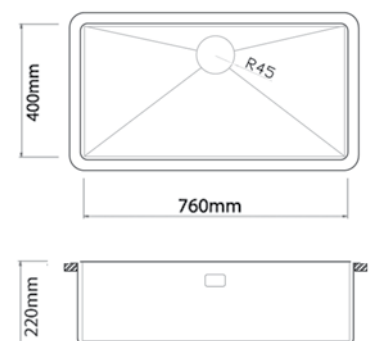
## PRF 900



### Features & Specification

- + Bowl size 760 x 400 x 220
- + 15mm radius corners
- + Overflow aperture
- + 1.2mm, 304 stainless steel
- + Steel surface, brushed satin finish
- + Sound damping pads
- + Functional drain groves
- + 25mm machined resin matrix rim
- + Under mount installation only

- + 90mm waste opening
  - + Waste & overflow sets not included with sink
  - + Supplied without adhesive or template
  - + Waste & Overflow set: COM024 | COM018
- ART NO. 911.100/101



## Commercial Range

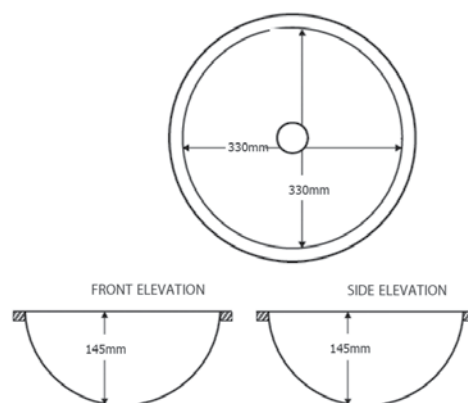
### PRPE305-NF



#### Features & Specification

- + Vanity sink
- + Bowl size Ø 330mm x 145mm
- + 1.2mm, 304 stainless steel
- + Sound damping pads
- + Machined resin matrix rim
- + Steel surface, brushed satin finish
- + Can only be installed in new worktops
- + Undermount installation only
- + This sink does not have an overflow
- + Waste fittings are not included
- + Supplied without adhesive or template

ART NO. 305.100



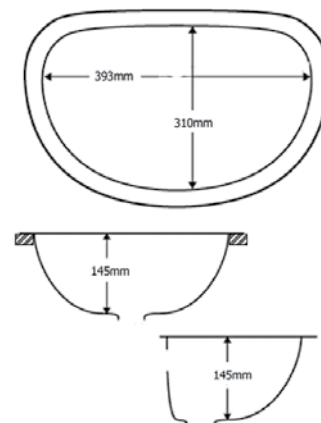
### PRPE303-NF



#### Features & Specification

- + Single bowl sink
- + Bowl size 393 x 310 x 145mm
- + 1.2mm, 304 stainless steel
- + Steel surface, brushed satin finish
- + Sound damping pads
- + Machined resin matrix rim
- + Under mount installation only
- + Waste sets not included with sink
- + Supplied without adhesive or template

ART NO. 303.100



### WASTE CHUTE

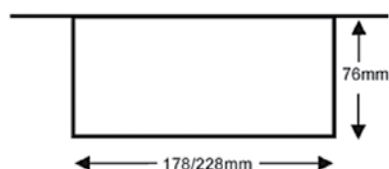
#### Features & Specification

- + Manufactured from 18 gauge, Type 304 stainless steel
- + Machined, resin matrix rim
- + Surface has a brushed satin finish
- + Can only be installed in new countertops
- + Undermount installation required. May not be top mounted
- + Supplied without mounting adhesive, clips or template
- + Available in a 178mm internal diameter (WCFE-180) and a 228mm internal diameter (WCFE-230)
- + 76mm depth

Model: WCFE-180 / WCFE-230

WCFE-180 ART NO. 307.100

WCFE-230 ART NO. 309.100



EDGESINKS™ in Solid Surface



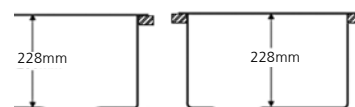
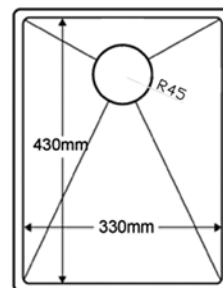
## PRFE510-NF



### Features & Specification

- + Bowl size 430 x 330 x 228
- + 15mm radius corners
- + No overflow with this sink
- + 1.2mm, 304 stainless steel
- + Steel surface, brushed satin finish
- + Sound damping pads
- + Functional drain groves
- + Machined resin matrix rim
- + Under mount installation only
- + 90mm waste opening
- + Waste sets not included with sink
- + Supplied without adhesive or template

ART NO. 510.101



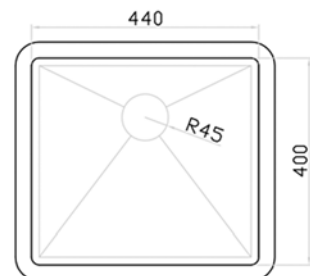
## PRFE280-NF



### Features & Specification

- + Bowl size 440 x 400 x 220
- + 15mm radius corners
- + No overflow with this sink
- + 1.2mm, 304 stainless steel
- + Steel surface, brushed satin finish
- + Sound damping pads
- + Functional drain groves
- + 25mm machined resin matrix rim
- + Under mount installation only
- + 90mm waste opening
- + Supplied without adhesive or template

ART NO. 211.751



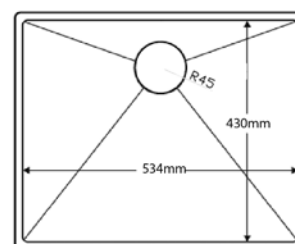
## PRFE520-NF



### Features & Specification

- + Bowl size 430 x 534 x 230
- + 15mm radius corners
- + No overflow with this sink
- + 1.2mm, 304 stainless steel
- + Steel surface, brushed satin finish
- + Sound damping pads
- + Functional drain groves
- + Machined resin matrix rim
- + Under mount installation only
- + 90mm waste opening
- + Waste sets not included with sink
- + Supplied without adhesive or template

ART NO. 520.101



EDGESINKS™ in Solid Surface

## Accessories

### CONTOUR CAT



- + Great versatility for edge processing making it ideal for installing Edge sinks into Quartz, Stone and Ceramic.
- + Ideal view of the grinding area
- + Good guidance even on narrow working surfaces
- + Variable speed with setting wheel
- + Height adjustment with locking screws
- + Long-life silicone connecting cable
- + Temperature-dependent overload protection
- + Spindle lock for easy tool change
- + Self-cutting carbon brushes and easy brush exchange.

ART NO. 507.101

### APPLICATOR



The VR200 adhesive applicator gun is a robust steel constructed tool. Compatible with mixpac 250ml cartridges system used by most adhesive brands.

ART NO. 590.101

### ADHESIVES



The 3077 brown adhesive is a 2 part methyl methacrylate seaming adhesive

- + 250ml size
- + Brown in colour to match the graph paper in regular laminates.
- + Includes 3 mixer nasals with each cartridge.

ART NO. 507.101

### POLISHING



#### DIAMOND POLISHING PADS

Foam-backed straight diamond hand pads are for use on quartz, granite, marble, ceramic. They are ideal for final honing of the worktop material back to the steel line of the sink.



#### ELECTROPLATED DIAMOND PAPER

Electroplated diamond paper is very useful for final honing of the worktop material in the corners of the EdgeSink.



#### SCOTCH BRITE PAD 7447 MAROON

The 3m 7447 scotch brite pad can be used to repair any light marks or scratches on the steel surface.



# Tooling

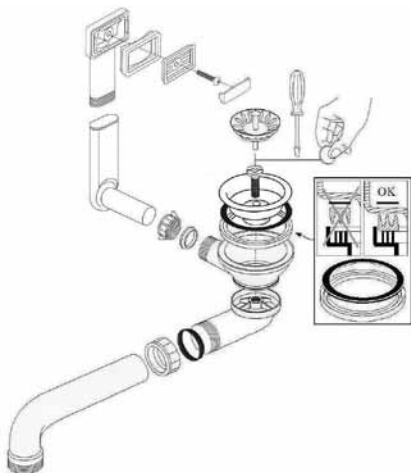
TTXC121-11-PB25		TCT 2 Flute 10 Deg Overlay Counter Top Edge Trimmer	TTXC616-PB25		TCT 2 Flute 45 Deg Overlay Top Edge Trimmer
TTXC066-19-PB25		TCT 2 Flute Overhang Trimmer	TTXC076-19-PB25		TCT Triple Flute Overhang Trimmer
TTXC121-11-PB25		TCT 2 Flute 10 Deg Overlay Counter Top Edge Trimmer	TTXC121-11-PB25		TCT 2 Flute 10 Deg Overlay Counter Top Edge Trimmer

## Diamond Tooling

VBE 60		<ul style="list-style-type: none"> <li>+ #60 grit (for cutting)</li> <li>+ Vacuum brazed router bit</li> <li>+ 11° Bevel</li> <li>+ M14 Female</li> <li>+ Internal water distribution feeds</li> <li>+ Oversize nylon bearing</li> <li>+ Operating speed 5500/6000rpm</li> <li>+ <b>For quartz &amp; natural stone</b></li> </ul>	EBE 200		<ul style="list-style-type: none"> <li>+ #200 (for pre-finishing)</li> <li>+ Electroplated router bit</li> <li>+ 11° Bevel</li> <li>+ M14 Female</li> <li>+ Internal water distribution feeds</li> <li>+ Oversize nylon bearing</li> <li>+ Operating speed 5500/6000rpm</li> <li>+ <b>For quartz &amp; natural stone</b></li> </ul>
		ART NO. 570.100			ART NO. 570.120
IBE 60		<ul style="list-style-type: none"> <li>+ #60 grit (for cutting)</li> <li>+ Segmented diamond router bit</li> <li>+ 11° Bevel</li> <li>+ External water distribution</li> <li>+ Oversize nylon bearing</li> <li>+ Operating speed 5500/6000rpm</li> <li>+ <b>For Dekton, Neolith, Laminam and all porcelain slab materials (also suitable for quartz &amp; natural stone)</b></li> </ul>	IBE 200		<ul style="list-style-type: none"> <li>+ #200 grit (for pre-finishing)</li> <li>+ Segmented diamond router bit</li> <li>+ 11° Bevel</li> <li>+ External water distribution</li> <li>+ Oversize nylon bearing</li> <li>+ Operating speed 5500/6000rpm</li> <li>+ <b>For Dekton, Neolith, Laminam and all porcelain slab materials (also suitable for quartz &amp; natural stone)</b></li> </ul>
		ART NO. 570.140			ART NO. 570.160

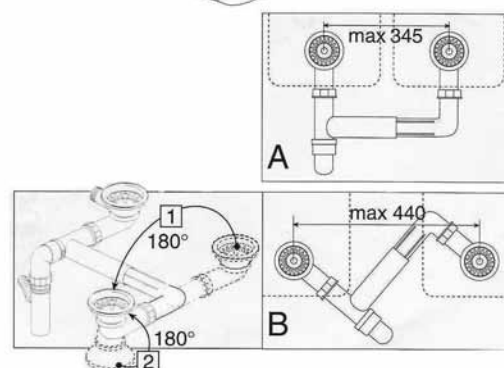
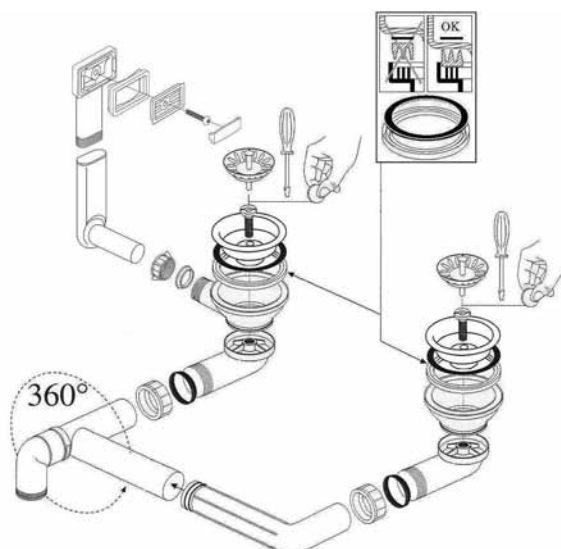
## Waste Fittings

024



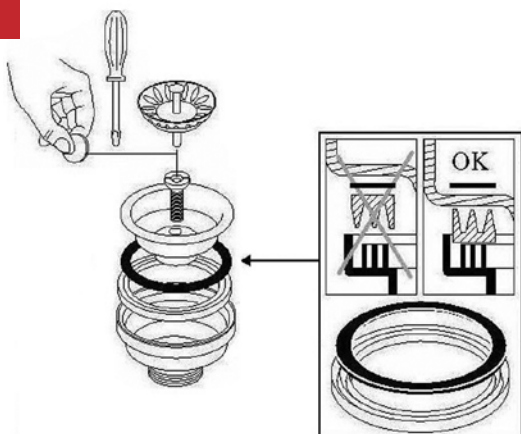
Compatibility: PRFE200 | PRFE280 | PRFE300 | PRFE900

025



Compatibility: PRFE350L | PRFE350R | PRFE400 | PRFE500

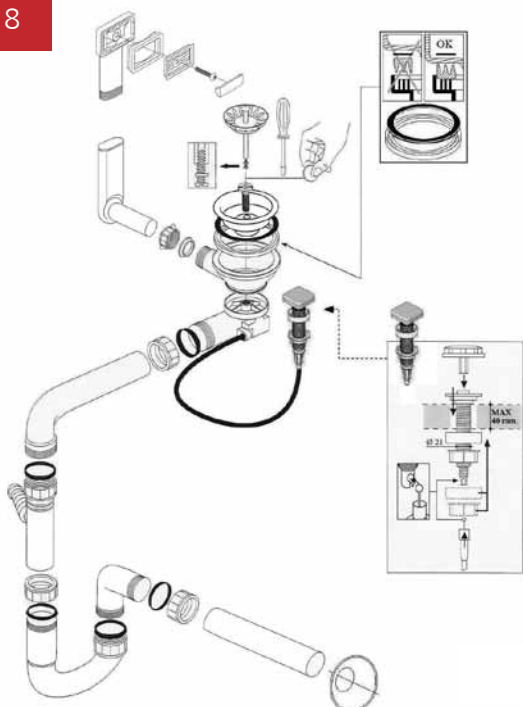
028



Compatibility: PRFE100

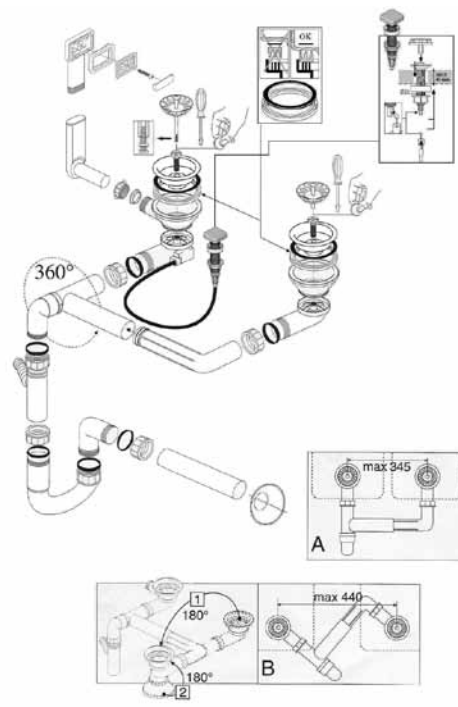
## Waste Fittings - with Pop Up Basket Strainer Waste & Overflow

018



Compatibility: PRFE200 | PRFE280 | PRFE300 | PRFE900

019



Compatibility: PRFE350L | PRFE350R | PRFE400 | PRFE500

# Important Information

## Adhesives

**It is very important to use the correct adhesives & use them within the manufacturer's recommendations.**

When bonding Edge sinks to laminate, compact & solid surface, we recommend using a 2 part methyl methacrylate adhesive, the same as solid surface adhesive (SSA), colour matched to the core of the work surface material.

When bonding Edge sinks to Quartz, ceramic, marble & stone, we recommend an Engineered Stone Adhesive (ESA). This 2 part 10-1 Methacrylate Adhesive is double the strength of standard SSA and more flexible to cope with different expansion rates & impact.

Edge sinks carry a limited range of colours in stock. Other well-known brands are Solmmate by Bondloc (UK) & Integra.



## Recessing Edge into worktop surface

Recessing Edge sinks into the worktop surface produces a more streamlined & modern look. It also reduces the amount of worktop material to be machined back to the steel line. This is a particular advantage when working with the harder materials such as Quartz & Ceramic.

Depth of the recess depends on the integrity & colour strength of the material, leaving 4 to 6 mm from the top surface is normal for most materials.

## Edge Sink resin rim size

We continually strive to develop & improve our products. Autumn 2016 we reduced the width of the resin rim around the sink edge from 31mm to 25mm. This minimises any obstruction on the underside of the worktop surface. In this changeover period, you should always check the rim size before machining your counter top.

ART numbers ending with 000 will have the 31mm resin rim size.

ART numbers ending with 001 will have the revised 25mm rim size.

The size of the sink bowls remain the same on each model.



## Installation guides for Edge sinks.

You will find installation guides on our website [www.edgesinks.eu](http://www.edgesinks.eu). Both step by step illustrations & videos of installing Edge sinks in Laminate, solid surface & Quartz.

It is important that the Edge sink is installed properly & in accordance with the manufacturers guide lines. Should you require any further information or advice, contact your distributor or email Edge Sinks at [sales@edgesinks.eu](mailto:sales@edgesinks.eu).

Scan the QR Code to view installation videos



# EDGESINKS™

Seamless Integration

Edge Sinks Europe LTD  
Kerlogue Business Park  
Kerlogue, Wexford  
Y35 A9PX  
IRELAND

Tel: 00 353 53 9122537  
Mobile: 00 353 86 2596160  
Email: [sales@edgesinks.eu](mailto:sales@edgesinks.eu)  
[www.edgesinks.eu](http://www.edgesinks.eu)

2017



EDGESINKS™ in Laminate



EDGESINKS™ in Fenix NTM®



EDGESINKS™ in Laminate



EDGESINKS™ in Hardwood